



Forest Policy and International Forest Management PIM

Spotlight on activities of the research group

► School of Agricultural, Forest and Food Sciences HAFL

1

Who we are

Prof. Evelyn Coleman Brantschen

Forst Ing. ETH, MPA, Lecturer in National & International Forest Policy



Prof. Dr. Claude Garcia

Professor of International Forest Management



Prof. Dr. Jürgen Blaser

Dipl. Forst Ing. ETH, Lecturer in International Forest Science & Climate Change



Dr. Sébastien Boillat

Dr. of Philosophy, Integrative Geography, Research Associate



Dr. Mélanie Feurer

PhD in Geography & Sustainable Development
MSc in Agricultural and Forest Sciences,
Research Associate



Jelena Markovic

MSc ETH Environmental Science,
Research Associate



Dr. Mariana Melnykovich

PhD in Economics of Natural Resource Use & Environmental Protection,
Research Associate



Dr. Patrick Waeber

Doctor of Philosophy,
Research Associate



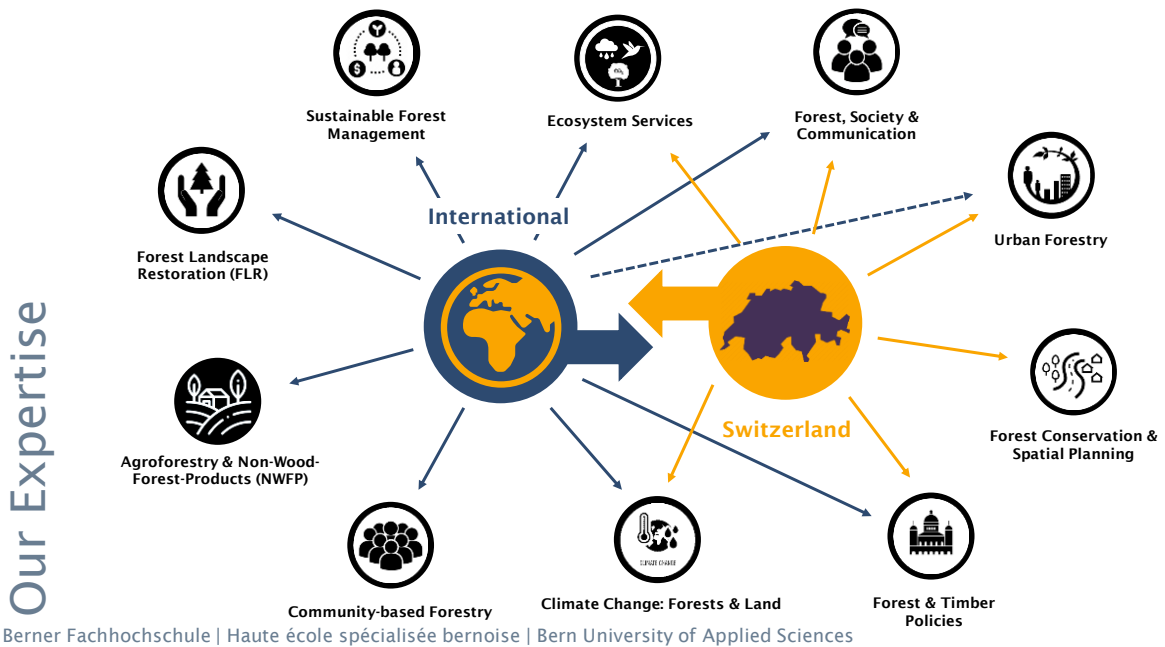
Dr. Jerylee Wilkes-Allemann

Dr. sc. ETH Zürich,
Research Associate



Berner Fachhochschule | Haute école spécialisée bernoise | Bern University of Applied Sciences

2



3

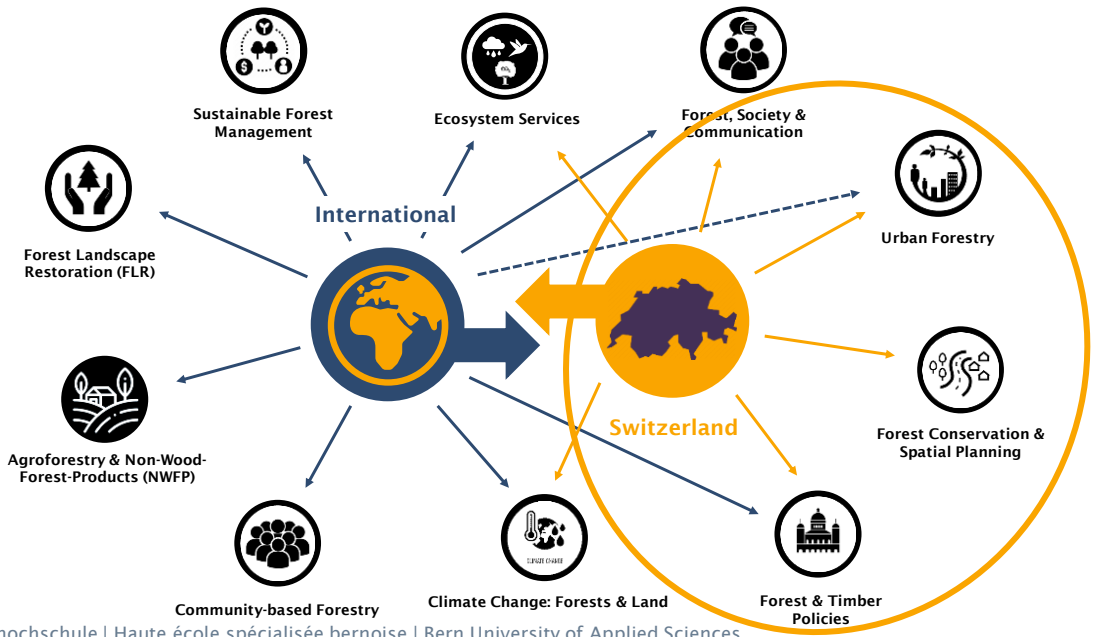
Areas of work

- ▶ Teaching:
 - Bachelor Forest Sciences (including minor climate change)
 - Master Regional Management in Mountain Areas, Circular Innovation and Sustainability
 - CAS Rebuild Ukraine, CAS Urban Forestry
- ▶ Consultancy
 - SDC mandate
 - BAFU: Global deforestation and Switzerland (Footprint study in link with EUDR)
- ▶ Research:
 - Horizon Europe: Ruractive (Empowering rural communities to act for change)
 - SNF ResCue (mangrove restoration)
 - Assessing forest services from the perspective of society (preliminary study citizen science)

Berner Fachhochschule | Haute école spécialisée bernoise | Bern University of Applied Sciences

4

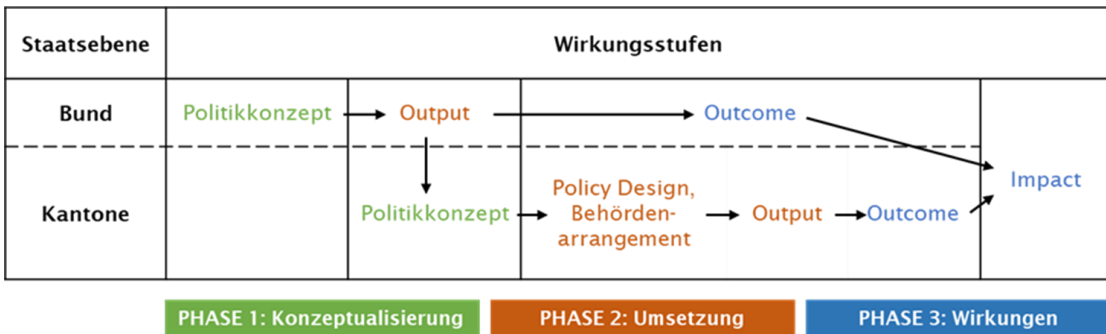
Our Expertise



Berner Fachhochschule | Haute école spécialisée bernoise | Bern University of Applied Sciences

5

Impact levels of a policy in federal systems



(own illustration based on Sager, Rüeßli 2005 and Ingold et al. 2016)

Berner Fachhochschule | Haute école spécialisée bernoise | Bern University of Applied Sciences

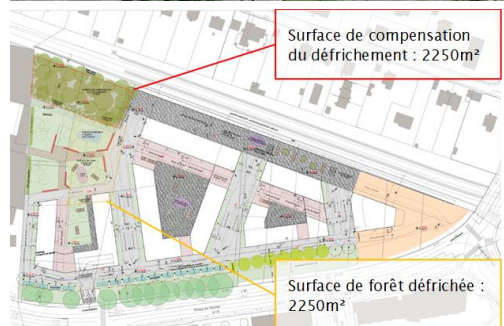
6

Forest conservation in the context of densification

Determining factors:

- ▶ Clear spatial planning objectives at cantonal level
- ▶ Holistic planning with early involvement of the forestry authorities
- ▶ Increased role of ecosystem services provided by forests
- ▶ Dual role of the cantonal administration as authorities and planners – small influence of municipalities
- ▶ Disclaimer: Specific planning framework in Geneva (small role of municipalities)

Coleman Brantschen, Evelyn Constance; Grubenmann, Vera; Wilkes-Allemann, Jerylee; Markovic, Jelena (2023). Wald und Raumnutzung: Rodung und Rodungersatz im Kontext der Siedlungsentwicklung nach innen: Beitrag des Waldes zu einer optimalen Raumnutzung am Beispiel des Kantons Genf: Abschlussbericht an das Bundesamt für Umwelt (BAFU), Abteilung Wald et à l'Office cantonal de l'agriculture et de la nature (OCAN), Service du paysage et des forêts, République et canton de Genève

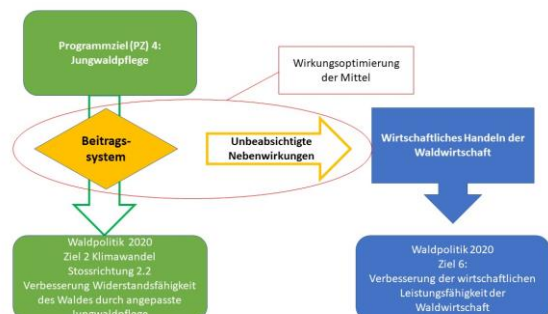


University of Applied Sciences

7

Effects of Federal Programme Agreements on Economic Behaviour in Swiss Forestry

- ▶ How can it be determined whether financial contributions to tending young forest have negative side effects on the goal of improving the performance of forestry?



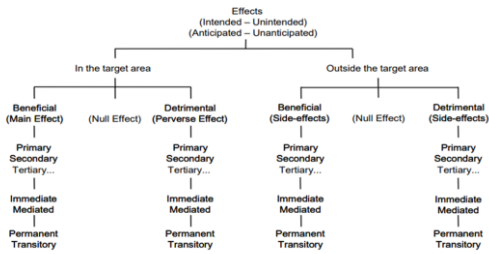
Coleman Brantschen E., Müller A., Arnold R., Wilkes-Allemann J., 2022: Effekte der Programmvereinbarungen auf das wirtschaftliche Handeln in der Waldwirtschaft, Vorstudie zur Erarbeitung einer Methodik am Beispiel Jungwaldpflege, im Auftrag des BAFU

Berner Fachhochschule | Haute école spécialisée bernoise | Bern University of Applied Sciences

8

Effects of Forest Subsidies on Biodiversity

- Infrastructure (roads) outside protection forests
- Investment credits



Source: Vedung, 2013

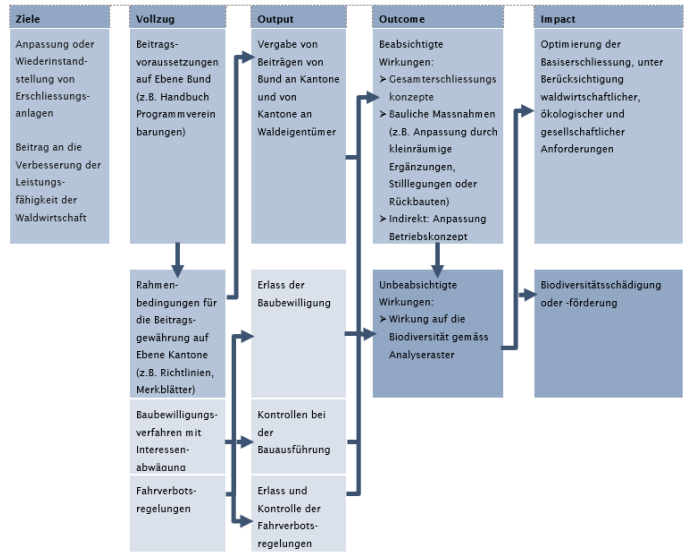


Abbildung 7: Wirkungsmodell Erschliessungen ausserhalb Schutzwald (Quellen: Bundesrat 2017b, BAFU 2018)

Coleman Brantschen E., Thür P., Waeber P. (2024): Wirkung von Subventionen auf die Biodiversität - Evaluation von Erschliessungsbeiträgen ausserhalb Schutzwald und forstlicher Investitionskredite, Studie im Auftrag des Bundesamts für Umwelt (BAFU) (not yet published)

9

Coordination of land-use planning and forests at municipal level (work in progress)

- On which topics is there a need for coordination between the political municipalities and forest planning?
- Which spatial planning and forest planning instruments are suitable for ensuring this coordination?
- What are the possibilities and limitations of these instruments in implementation?



Berner Fachhochschule | Haute école spécialisée bernoise | Bern University of Applied Sciences

10