



**GENERAL ASSEMBLY
09. FEBRUARY 2024,
BIRMENSDORF**



Welcome !

Program General Assembly



09:00 –09:10	Arthur Gessler	Introduction
09:15 –09:45	Olschewski, Roland	Forest-related economic and social science research
09:45 –10:10	Coffee Break	
10:15 –10:45	Coleman Brantschen, Evelyn Constance	Forest Policy and International Forest Management PIM - Spotlight on activities of the research group
10:45 –11:05	SFL Members	Status of SFL, Confirmation of Financing Plan
11:05 –11:25	SFL Members	Election of the Steering Committee
11:25 –12:00	SFL Members	Varia
12:00	Lunch	

New Member



Evelyn Constance Coleman Brantschen (Bern University of Applied Sciences, BFH)

- Forest and spatial planning
- Forest conservation policy

Candidates for the Steering Committee election



Günther Hoch
(University of Basel)



Valentin Queloz
(WSL)

Presentations



Roland Olschewski

Environmental and Resource Economics, WSL

«Forest-related economic and social science research»

BREAK
(09:45 – 10:10)

Presentations



Evelyn Constance Coleman Bratschen

National and international forest policy, BFH

«Forest Policy and International Forest Management PIM - Spotlight on activities of the research group»

Program General Assembly



09:00 –09:10	Arthur Gessler	Introduction
09:15 –09:45	Olschewski, Roland	Forest-related economic and social science research
09:45 –10:10	Coffee Break	
10:15 –10:45	Coleman Brantschen, Evelyn Constance	Forest Policy and International Forest Management PIM - Spotlight on activities of the research group
10:45 –11:05	SFL Members	Status of SFL, Confirmation of Financing Plan
11:05 –11:25	SFL Members	Election of the Steering Committee
11:25 –12:00	SFL Members	Varia
12:00	Lunch	

Activities 2023



SLF projects: 2021 project call with LabexArbre (FR) → approval of project «The rescue of beech by well-adapted mycorrhizal fungal partners – Do symbiotic interactions confer adaptive capacity to drought conditions?»; PI B. Dauphin WSL and PI A. Kohler INRAE UMR France

«Future forests» NFP Projektskizze submitted to SNF

SFL website and EnviDat special View: Small restructure to put news-tiles up front, to show link to member/partner events more prominent

Support for TreeNet Anniversary Conference; other member and partner events on website of SFL; small Symposium at WSL

Summer School WSL Biodiversity Center (21.-27.8.) «*Forest Biodiversity*»

Dialog mit Schweizerischer Forstverein (10.11.) „*Netto Null 2050 – Der Beitrag der Waldwirtschaft*“

KOK-Ausschuss meets SFL (19.1.23), Ideenpool KliWA Kt. Bern, Forte App at OLMA Lignum St. Gallen

Communication: NewsFlash, SZF Articles

Activities 2023



Dialog mit Schweizerischer Forstverein (10.11.22) „*Netto Null 2050 – Der Beitrag der Waldwirtschaft*“

KOK-Ausschuss meets SFL (19.1.23),

Outreach: Forte App at OLMA Lignum St. Gallen

Communication: SZF Articles (about Dialogue and about topics from Science Day)

Dialog mit KOK and WaldSchweiz (29.6.23, ETHZ) – «*Baumarten im Schweizer Wald der Zukunft*»

Science Day (6. Oktober 2023, ETHZ)

Summer School with ETH Initiatives SCENE and MainWood, and NFZ.forestnet (19.-26.8.23)

General Assembly 26.1.2023 Bern 2023

Funding opportunity: Application for a Science Practice Network at the Velux Foundation (PI Andi Rigling). Linkage between SwissForestLab and NFZ.forestnet

NRP 82: Biodiversity and Ecosystem Functioning: Parts of the NRP proposal «Future Forest» from the SwissForestLab has been integrated; Arthur Gessler member of the steering committee.

SwissForestLab 2.0 (Financing Plan)



Context

- The financial support from WSL and BAFU to the SFL stops at the end of 2024
- To continue our goal to link forestry researchers across Switzerland, promote high-end research and interactions with stakeholders, membership fees need to be introduced
- Survey amongst Group/Research Unit Leaders was conducted
- 3 membership options were proposed

Budget	Business	First class
<p>What you bring</p> <p>No financial support</p>	<p>What you bring</p> <ul style="list-style-type: none"> - Groups >10 SFL members : 1'500 CHF - Groups <10 SFL members : 1'000 CHF - Individuals: 200 CHF 	<p>What you bring</p> <ul style="list-style-type: none"> - Groups >10 SFL members : 3'000 CHF - Groups <10 SFL members : 2'000 CHF - Individuals: 400 CHF
<p>What we offer</p> <ul style="list-style-type: none"> - Yearly summer school : NEW: organizers would be voluntary and must rotate among the members - Yearly Science Day to show case your research: NEW: organizers would be voluntary and must rotate among the members - Every two years Dialogue with practice and stakeholders: NEW: organizers would be voluntary and must rotate among the members 	<p>What we offer</p> <ul style="list-style-type: none"> - NEW: Organization of thematical workshops (3 calls per year) - Financial support to organize meetings, workshops and invited speakers in your institution - Maintenance of SFL Executive Office to organize: <ul style="list-style-type: none"> - Yearly summer school - Yearly Science Day to show case your research - Every two years Dialogue with practice and stakeholders - Provide access and support with Envidat (for non-WSL members) - News flash and social media to showcase your research - Continued acquisition of further means for SFL projects 	<p>What we offer</p> <ul style="list-style-type: none"> - NEW: Yearly funding of innovative and/or interdisciplinary research projects (up to 25'000 CHF each) - NEW: Organization of thematical workshops (3 calls per year) - Financial support to organize meetings, workshops and invited speakers in your institution - Maintenance of SFL Executive Office to organize: <ul style="list-style-type: none"> - Yearly summer school - Yearly Science Day to show case your research - Every two years Dialogue with practice and stakeholders - Provide access and support with Envidat (for non-WSL members) - News flash and social media to showcase your research - Continued acquisition of further means for
<p>What we risk</p> <ul style="list-style-type: none"> - Termination of the SFL Executive Office - Closing the SwissForestLab due to lack of commitment of the members 		

SwissForestLab 2.0 (Financing Plan)



Result

- Just under 50 % were in favor of the business class option, while around 25 % wanted the budget option or the first class option.

Budget	Business	First class
<p>What you bring</p> <p>No financial support</p>	<p>What you bring</p> <ul style="list-style-type: none"> - Groups >10 SFL members : 1'500 CHF - Groups <10 SFL members : 1'000 CHF - Individuals: 200 CHF 	<p>What you bring</p> <ul style="list-style-type: none"> - Groups >10 SFL members : 3'000 CHF - Groups <10 SFL members : 2'000 CHF - Individuals: 400 CHF
<p>What we offer</p> <ul style="list-style-type: none"> - Yearly summer school : NEW: organizers would be voluntary and must rotate among the members - Yearly Science Day to show case your research: NEW: organizers would be voluntary and must rotate among the members - Every two years Dialogue with practice and stakeholders: NEW: organizers would be voluntary and must rotate among the members 	<p>What we offer</p> <ul style="list-style-type: none"> - NEW: Organization of thematical workshops (3 calls per year) - Financial support to organize meetings, workshops and invited speakers in your institution - Maintenance of SFL Executive Office to organize: <ul style="list-style-type: none"> - Yearly summer school - Yearly Science Day to show case your research - Every two years Dialogue with practice and stakeholders - Provide access and support with Envidat (for non-WSL members) - News flash and social media to showcase your research - Continued acquisition of further means for SFL projects 	<p>What we offer</p> <ul style="list-style-type: none"> - NEW: Yearly funding of innovative and/or interdisciplinary research projects (up to 25'000 CHF each) - NEW: Organization of thematical workshops (3 calls per year) - Financial support to organize meetings, workshops and invited speakers in your institution - Maintenance of SFL Executive Office to organize: <ul style="list-style-type: none"> - Yearly summer school - Yearly Science Day to show case your research - Every two years Dialogue with practice and stakeholders - Provide access and support with Envidat (for non-WSL members) - News flash and social media to showcase your research - Continued acquisition of further means for
<p>What we risk</p> <ul style="list-style-type: none"> - Termination of the SFL Executive Office - Closing the SwissForestLab due to lack of commitment of the members 		

No more window switching
Our PowerPoint add-in lets you create, edit and present your Menti. All inside of PowerPoint.

 Mentimeter



Your email address

Your password

[Log in](#)

[Forgot password?](#) [Log in with SSO](#)

New to Mentimeter? [Sign up](#)

SwissForestLab General Assembly

09.02.2024

Program General Assembly

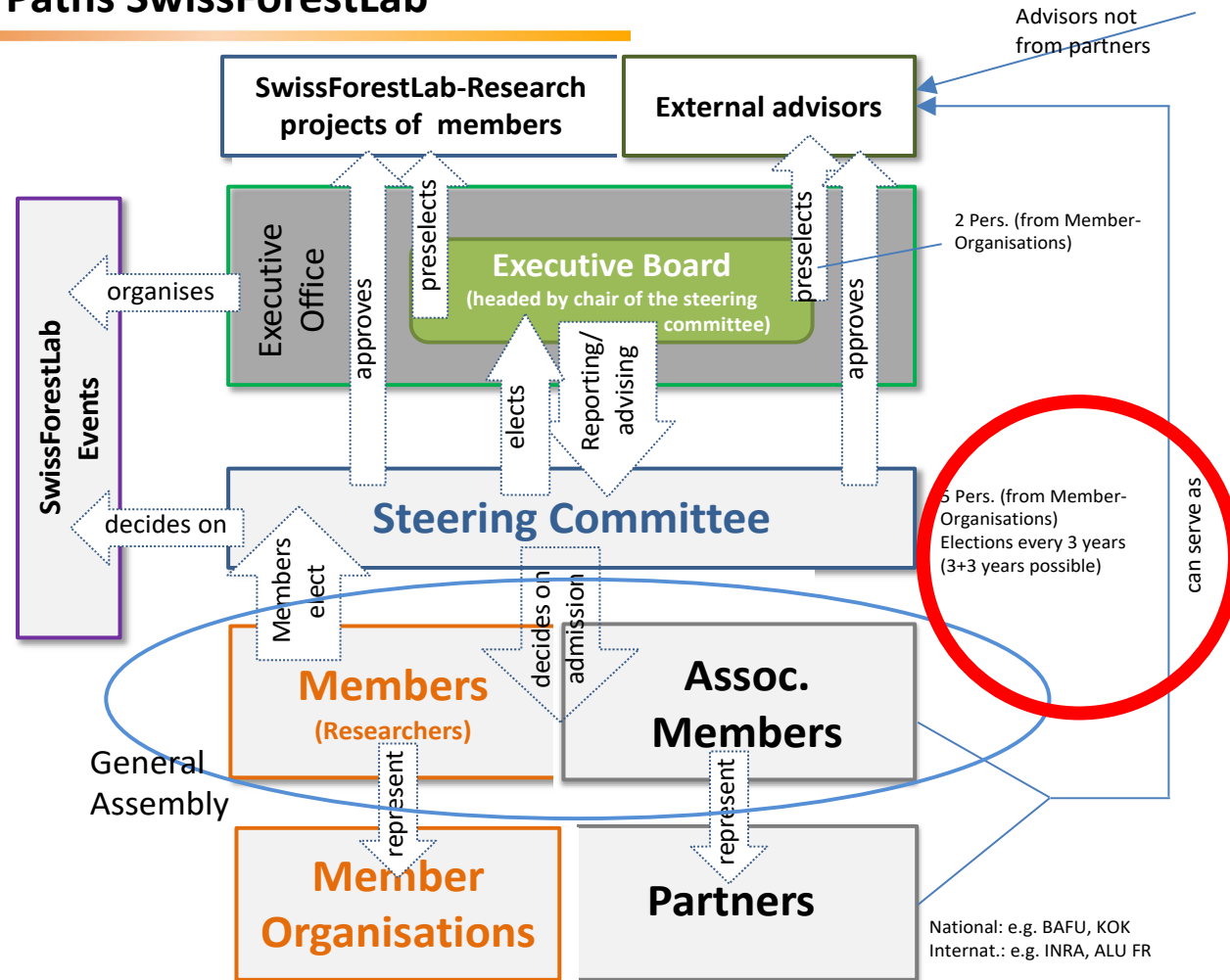


09:00 –09:10	Arthur Gessler	Introduction
09:15 –09:45	Olschewski, Roland	Forest-related economic and social science research
09:45 –10:10	Coffee Break	
10:15 –10:45	Coleman Brantschen, Evelyn Constance	Forest Policy and International Forest Management PIM - Spotlight on activities of the research group
10:45 –11:05	SFL Members	Status of SFL, Confirmation of Financing Plan
11:05 –11:25	SFL Members	Election of the Steering Committee
11:25 –12:00	SFL Members	Varia
12:00	Lunch	

Steering Committee of the SwissForestLab



Decision Paths SwissForestLab



SwissForestLab General Assembly

09.02.2024

The steering committee 2022 – 2023



Andreas Rigling
ETH Zurich
Forest growth and Global Change; climate-smart and integrated forest management



Arthur Gessler
WSL
Biogeochemical cycles, ecosystem ecology and long-term forest monitoring



Charlotte Grossiord
EPFL
Ecophysiology and species interaction



Ansgar Kahmen
Uni Basel
Interaction between plants and the environment; ecosystem functioning and services



Willy Tinner
Uni Bern
Palaeoecology; a long-term perspective to address questions about the ecological and societal consequences of climatic change

The steering committee – list of nominees



Steering Committee Members already confirmed last General Assembly



Andreas Rigling
ETH Zurich
Forest growth and Global Change; climate-smart and integrated forest management



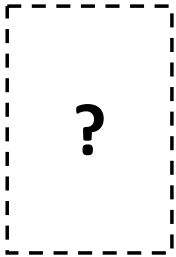
Arthur Gessler
WSL
Biogeochemical cycles, ecosystem ecology and long-term forest monitoring



Charlotte Grossiord
EPFL
Ecophysiology and species interaction



Willy Tinner
Uni Bern
Palaeoecology; a long-term perspective to address questions about the ecological and societal consequences of climatic change



New Member

The steering committee – The Candidates



Dr. Valentin Queloz

WSL

Tree health, Mycology, Tree Pathology, Root Endopyhtes, Biogeography, Population Genetics

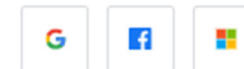


Dr. Günter Hoch

Uni Basel

Ecophysiology of trees, Carbon reserve functions in plants, Drought stress physiology, Cold limits of trees and alpine treelines

No more window switching
Our PowerPoint add-in lets you create, edit and present your Menti. All inside of PowerPoint.



Your email address

Your password

Log in

[Forgot password?](#) [Log in with SSO](#)

New to Mentimeter? [Sign up](#)

Acknowledgement



Ansgar Kahmen

Uni Basel

Interaction between plants and the environment; ecosystem functioning and services

Program General Assembly



09:00 –09:10	Arthur Gessler	Introduction
09:15 –09:45	Olschewski, Roland	Forest-related economic and social science research
09:45 –10:10	Coffee Break	
10:15 –10:45	Coleman Brantschen, Evelyn Constance	Forest Policy and International Forest Management PIM - Spotlight on activities of the research group
10:45 –11:05	SFL Members	Status of SFL, Confirmation of Financing Plan
11:05 –11:25	SFL Members	Election of the Steering Committee
11:25 –12:00	SFL Members	Varia
12:00	Lunch	

Thanks



WSL and BAFU for financial support

Members and partners for their contribution to workshops, summer schools, projects, activities.....

LUNCH

(12:00)

No more window switching
Our PowerPoint add-in lets you create, edit and present your Menti. All inside of PowerPoint.

SwissForestLab General Assembly



Your email address

Your password



[Forgot password?](#) [Log In with SSO](#)

New to Mentimeter? [Sign up](#)

09.02.2024

Mission statement

The SwissForestLab is a **research platform and infrastructural network** to assess the effects of a dynamically changing environment on forests and trees worldwide.

We **advance basic research** by combining and **supporting** research on experimental sites and laboratory facilities with observations on long-term monitoring field plots and dynamic modeling approaches.

We aim to **provide interfaces to translate novel findings to practice** and to support the **dialogue** between practice and science.

The SwissForestLab supports **networking and outreach** by workshops, conferences, summer schools and other events.

The SwissForestLab research network promotes excellent cooperative research, cooperation with scientists all over the world and fosters scientific breakthroughs to obtain an in-depth understanding of ecosystem functioning, resistance and resilience.

The idea – a Network for Research

Starting point: The important and pressing scientific questions in forest ecosystem research need to be tackled jointly

- ✚ Outstanding scientists with an excellent expertise in the field of forest research are working in Switzerland
- ✚ The forest research is part of various disciplines and institutions
- ✚ There is a wide range of different infrastructure and approaches established by Swiss research institutions and Universities:
 - Field sites (networks, monitoring and experiments)
 - Installations like cranes and measurement towers etc.
 - Data from field and laboratory analyses and monitoring
 - Specific laboratories and methods
 - Various experimental and modelling approaches
- ✚  **Bringing together these elements within a network** will lead to:
 - Strong synergies, new insights and findings
 - A better visibility of existing expertise and infrastructure
 - The possibility to find new cooperation partners
 - New and innovative interdisciplinary experiments and projects
 - **Finally: An increased visibility of Swiss forest research worldwide**

Aims and Mission

- ❏ **Advancement of basic research**
- ❏ **Translational Science - provide Interfaces** to translate novel findings to practice and university teaching
- ❏ **Strengthen cooperation between**
 - **Scientists from** different research fields
 - **Scientists and Practitioners**

- ❏ ***On the national level: establishment of a one-stop agency*** for forest research and infrastructure