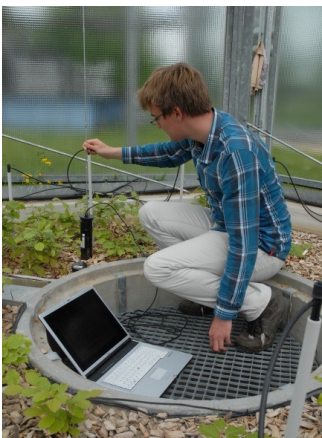


**GENERAL ASSEMBLY  
21. JANUARY 2025  
EPFL LAUSANNE**



**Welcome !**

# Program General Assembly



09:00 – 09:10	Arthur Gessler	Introduction
09:10 – 09:40	Charlotte Grossiord	Presentation of host group research
09:40 – 10:10	Coffee Break	
10:15 – 10:45	Félix Fracchia	SwissForestLab project MAGIC
10:45 – 11:15	Stefan Klesse	SwissForestLab project ClimBeech
11:15 – 11:35	Ionut Iosifescu-Enescu	Update on EnviDat
11:35 – 12:00	Arthur Gessler Andreas Rigling Arthur Gessler	Status of SwissForestLab (5') Introduction TriNational ForestLab (15') Confirmation of Revision of the SwissForestLab statutes (5')
12:00 – 12:15	SFL Members	Election of the Steering Committee
12:15 – 12:30	SFL Members & Partners	Varia
12:30 – 13:30	Lunch	
13:30	Charlotte Grossiord et al.	Guided tour through Grossiord Lab

# Changes in the SwissForestLab after GA 24



- On 09.02.2024, the General Assembly decided to introduce **annual membership fees**.
- Three variants of membership fees were introduced:
  - Group of >10 members: 1'500 CHF per year
  - Groups of ≤10 members: 1'000 CHF per year
  - Individual: CHF 200 per year

University of Applied Sciences and Arts  
of Southern Switzerland

**SUPSI**

**ETH** zürich



## The SwissForestLab as off December 2024:

- 203 active members
- 28 research groups
- 12 institutions

**EPFL**

**u<sup>b</sup>**

UNIVERSITÄT  
BERN



VOGELWARTE.CH



# Changes in the SwissForestLab after GA 24



- Continued support of all partners:



SwissForestLab > About Us > Partners and networks

## Partners and networks

### Partner organisations



### Research networks





# Presentations



**Charlotte Grossiord**  
Functional Plant Ecology, WSL Lausanne

"Meeting the Plant Ecology Research Lab"

## Félix Fracchia

Ecological Genetics, WSL  
**SwissForestlab project MAGIC**

"Prevalence of drought and soil conditions in structuring fungal communities of healthy and decaying beech trees in forests".

**Stefan Klesse**

Ecosystem Ecology, WSL  
**SwissForestlab project ClimBeech**

“CLIMBEECH - Climate sensitivity and adaptive capacity  
of European beech under climate change”

# Presentations



**Ionut Iosifescu Enescu**  
WSL



## EnviDat News and Updates

SwissForestLab General Assembly  
Lausanne/online  
January 21, 2025



SWISSFORESTLAB GENERAL ASSEMBLY



21.01.2025

# Activities 2024



---

**General Assembly** 9.2.2024 at WSL (and online)

---

**PhenoRangers WS:** final event on Weissenstein (27.2.2024). Continued support from SCNAT to do the workshops (project officially finished)

---

**Membership Fees:** implementation of membership fees 2024

---

**Communication:** SZF Articles (ScienceDay 24, Summer School 24, Montagskolloquium)

---

**Call for newsflash:** 6.6.24 not successful

---

**Call for thematical WS:** received 6 proposed ideas. All will be handled in 2025. After that, new call will be launched.

---

**Summer School** with ETH WSL Extremes Program and NFZ.forestnet: Titel «Forests and Extremes: Crisis or Transition?», received over 50 applications (18.-25.8.24)

---

**Collaborations:** WaldKongress WaldSchweiz 3.9.24, «Waldverjüngung unter Druck: Es besteht Handlungsbedarf!»

---

**Funding:** Application for a Science Practice Network at the Velux Foundation successful – The TriNational ForestLab. Linkage between SwissForestLab and NFZ.forestnet. PI Andreas Rigling

---

**NRP 82 «Biodiversity and Ecosystem Functioning»:** Preparatory-phase proposals submitted and decided on. Submission of full proposals Feb 2025.

# Planned Activities 2025



---

**ScienceDay:** 14.2.25 Basel, «Forests in the Face of Accelerating Environmental Change – Quantifying, Monitoring, and Predicting Climate Change Impacts»

→ submission of presentation: deadline 31.1.25

→ registration: deadline 9.2.25

---

**Summer School:** 25.-29.8.25 in **collaboration with TriNational ForestLab** and NZF.forestnet in Nancy (France), «Challenges and latest tools for forest planning and management in the 21st century»

→ application information starting February 25

---

**Communication/Outreach:** Articles SFZ (2x ScienceDay, possible article about ETH Montagskolloquium für die Praxis)

---

**Dialog 25:** Contact with BAFU, possible collaboration on the Topic of the «integrate network». Timing winter 25/26

---

**General Assembly 26:** Steering Committee decided to do the event **only online** and **without scientific input** to shorten meeting time and focus networking activities in other events (ScienceDay, Dialog, thematic workshops)

---

**Summer School 26:** 16.8.-21.8.26 in collaboration with ETH Initiative SCENE, TriNational ForestLab and NZF.forestnet on Monte Verità (Switzerland) supported by the Congressi Stefano Franscini



WSL will further **be the host** of the SwissForestLab.

We can **use the remaining funds** to keep coordination and events going.

In collaboration with the Trinational Forestlab we can work for another four years.

Internal structure (program, centre, platform etc.) at WSL to be decided

BAFU interested to continue to support SwissForestLab

# Presentations



**Andreas Rigling**  
ETHZ

The TriNational FORESTLab – Supporting research, exchange and outreach in forest science



# TRINATIONAL FORESTLAB

Funded by the VELUX STIFTUNG  
4 Yrs: December 1 2024 - November 30 2028

“Supporting research, exchange  
and outreach in forest science”

A. Rigling, R. Maier et al.

SwissForestLab General Assembly, Lausanne, January 21 2025

# The TRINATIONAL FORESTLAB - Background

- One of the main issues at present and in future is that **forest management needs innovative approaches** to pursue **multiple environmental, social, and economic objectives**, ranging from wood and non-wood forest products for the **bioeconomy** to the essential importance of **forests as habitats** for various animal and plant species, and for **climate mitigation, tourism and recreation, protection** of human infrastructure...
- The need to **balance these partially competing demands** makes management decisions highly complex and multifaceted. **Climate-Smart Forestry (CSF)** and **Integrated Forest Management** are at present proposed as concepts to help policymakers and practitioners develop focused forestry governance and management **to adapt forests to and to mitigate climate change effects** while also **providing balanced ecosystem services and maintaining biodiversity**.

# TNFL - Setting

The TRINATIONAL FORESTLAB will provide an environment for the **dialogue between practice, policy and science**, allowing forest practitioners from Switzerland, France, Germany and beyond to set the agenda and will bring together **international graduate students with forest related stakeholders and scientists**.

The TRINATIONAL FORESTLAB will build on **existing networks**, will closely link them and will enrich them with urgent forms of dialogues between scientists, stakeholders and the next generation of scientists and decision makers. It will be based on:

- the NFZ.forestnet ([www.nfz-forestnet.eu](http://www.nfz-forestnet.eu))
- the SwissForestLab ([www.swissforestlab.ch](http://www.swissforestlab.ch)) and linked to
- the knowledge platform Waldwissen.net ([www.waldwissen.net](http://www.waldwissen.net))

# TNFL - Aims

## A network for the dialogue between practice and science.

The overall objective of the TRINATIONAL FORESTLAB is to create a **cross-border** international forestry network with a focus on **Switzerland, France and Germany** (and beyond) that allows

- (1) **exchange** of and **cooperation** in forest related research → **scientific workshops**
- (2) development of good practice examples **dialogues** between science and stakeholders from policy and practice → **dialogues with practitioners**
- (3) Via waldwissen.net crucial **research- and practice-related information** for the whole international Forestry community and topic- and project-specific cooperation will be boosted and leveraged in **Europe** and **beyond** the TRINATIONAL FORESTLAB → **outreach publications**
- (4) platform for the **next generation** of international scientists and decision makers to interact with European scientists and with stakeholders from all forest related areas → **summer schools**
- (5) Basis for urgently needed **stakeholder-inspired research** on how forest resilience and ecosystem services can be maintained in a changing future, taking into account **local contexts** and **international cooperation** → **one research project**



# TNFL - Organization

## STEERING BOARD:

### NFZ:

A. Rigling (ETHZ/WSL)

M. Fournier (AgroParisTech/INRAe)

C. Grossmann (FVA)

R. von Detten (Uni FR)

### Waldwissen:

M. Moritzi (WSL-Waldwissen)

### SwissForestLab:

A. Gessler (WSL, Chairman SFL)

## ADVISORY BOARD:

- 5-7 representatives from Science and Admin
- from institutions outside of the NFZ- and SFL-networks

## SCIENTIFIC COORDINATOR (50%, 4 yrs):

- Regine Maier (WSL/ETHZ)

# TNFL - Time schedule

**2025** Dec24 – Feb25  
Mar25 – May25  
Jun25 – Aug25  
Sep25 – Nov25

**2026** Dec25 – Feb26  
Mar26 – May26  
Jun26 – Aug26  
Sep26 – Nov26

**2027** Dec26 – Feb27  
Mar27 – May27  
Jun27 – Aug27  
Sep27 – Nov27

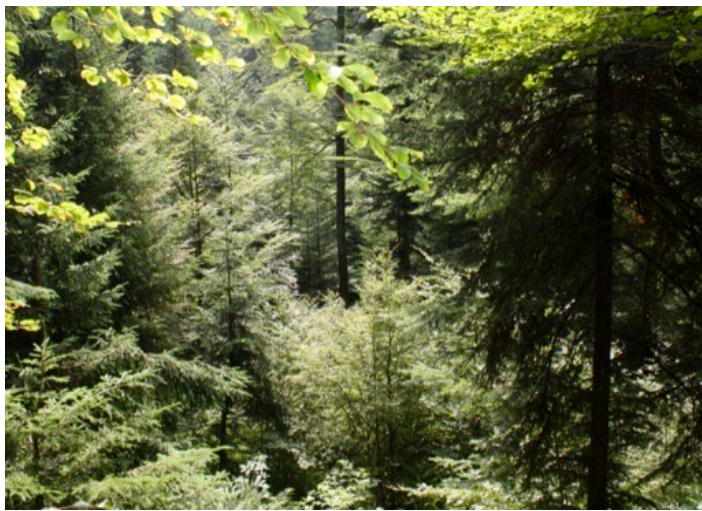
**2028** Dec27 – Feb28  
Mar28 – May28  
Jun28 – Aug28  
Sep28 – Nov28

Task	Year 1				Year 2				Year 3				Year 4			
	Q1	Q2	Q3	Q4	Q1	Q2	Q3	Q4	Q1	Q2	Q3	Q4	Q1	Q2	Q3	Q4
Establishment of the coordination office	█															
Coordination office as one stop agency for the whole network - organization and planing of the events		█														
Dialogue with practice - peparation phase with trinational coordination				M1												
Dialogues with practice	CH															
	Nancy															
	Freiburg															
Dialogue integrated evaluation							M2a				M2b				M2c	
Scientific workshops	CH				M3a								M3d			
	Nancy						M3b									
	Freiburg								M3c							
Summer schools	CH															
	Nancy															
	Freiburg															
SummerSchool integrated evaluation				M4a				M4b				M4c				M4d
Stakeholder inspired project							M5									
Publications in waldwissen.net																M6

# Who are the other two partners of the TNFL

## TRINATIONAL FORESTLAB





# NFZ.forestnet

The Nancy-Freiburg-Zürich forest research and education network



# NFZ.forestnet

- NFZ.forestnet was created in 2006. The **network is composed of 7 institutions**, universities and research centres, in Nancy, Freiburg, and Zurich and Switzerland.
- All in all, 700 researchers and professors work in NFZ.forestnet member institutions representing a hot-spot of modern forest research and education in central Europe.
- The thematic focus of the NFZ.forestnet lies on **forestry, forest ecology and forest-related products**. It aims at creating and developing collaborative research and education projects.

# Who is NFZ.forestnet?

- Institut National de la Recherche Agronomique INRAe Nancy
- University de Lorraine
- AgroParisTech (Natural School of Rural, Water and Forest Engineering, Nancy Centre)
- Forest Research Institute of Baden-Württemberg FVA
- University of Freiburg, Faculty of Environment and Natural Resources



- ETH Zürich, Departement of Environmental Systems Sciences
- WSL Swiss Federal Research Institute



# What is NFZ.forestnet?

University teaching  
(Bachelor & Master)

Research

Summer Schools  
(PhD & PostDoc)

**nfz.forestnet**

# NFZ Summer Schools

19–26 August 2023

Davos, Switzerland



## PROMOWOOD

Promotion of wood as key element  
for achieving net zero



August 25–29<sup>th</sup>, 2014  
Nancy, France

Summer School on “Species Interactions in Mixed Forest Ecosystems”

# MIXFOR

NFZ - Summer School 2016: BioFor

Freiburg im Breisgau,  
Germany



# NFZ Summer Schools → 22 since 2005

- 2025: Forest planning and management in the 21st century ..., Nancy, F \*jointly with SFL
- 2024: Forests and Extremes: Crisis or Transition? Davos CH \*jointly with SFL
- 2023: Promotion of wood as key element for achieving net zero, Davos CH \*jointly with SFL
- 2022: Biodiversity, a key element for temperate forest ecosystems, Davos CH \*jointly with SFL
- 2021: Long-term Forest Monitoring, Davos CH \*jointly with SFL
- 2020: -
- 2019: Resilience of Forest Ecosystems under Global Change, Davos CH \*jointly with SFL
- 2018: Carbon Sequestration in Forest Ecosystems, Davos CH \*jointly with SFL
- 2017: International Forestry and Global Issues, Nancy F
- 2016: Bioeconomy - a challenge for European forestry and the bio-based sector, Freiburg D
- 2016: Integrated land-use systems, Freiburg D
- 2015: CC impacts on forest ecosystems: Disciplinary and interdisciplinary challenges across spatial scales, Fafleralp CH
- 2015: Stable Isotopes in Forest Ecosystem Research, Champenoux F
- 2014: Mixed Forests Ecosystems, Nancy F
- 2013: Douglas fir, opportunities and risks for European Forestry, Esthal D
- 2012: Forest Economics in a Changing Environment, Maienfeld CH
- 2011: New Challenges for Interdisciplinary Wood Research, Nancy F
- 2010: Impacts of Climate Change on Growth and Mortality of Forests in Europe, Freiburg D
- 2009: How to Publish and Conference, Zürich CH
- 2008: Modelling Forest Community Organization, Functions ] Dynamics for Improving Forest Management, Le Tholy F
- 2007: Innovative approaches for sustainable management of forest ecosystems under a GC, Freiburg D
- 2006: Mountain ecology and alpine ecosystem management, Davos, CH
- 2005: Land use, land-use change and forest history – impacts on the environment, La Bresse F



# Teaching: Joint lectures

e.g. The Mountain Forest Ecology Course in Davos Switzerland -  
A joint activity of University of Freiburg, ETH, WSL, University  
of Lorraine





# Joint Research Projects and Publications

Journal of Applied Ecology

Journal of Applied Ecology 2016

doi: 10.1111/1365-2745.12743

Drought responses by individual tree species are not often correlated with tree species diversity in European forests

David I. Forrester<sup>1,2</sup>, Damien Bonal<sup>2</sup>, Seid Dawud<sup>3</sup>, Arthur Gessler<sup>4,5</sup>, André Granier<sup>2</sup>, Martina Pollastrini<sup>6</sup> and Charlotte Grossiord<sup>1</sup>

Global Change Biology WILEY

PRIMARY RESEARCH ARTICLE

Growth resistance and resilience of mixed silver fir and Norway spruce forests in central Europe: Contrasting responses to mild and severe droughts

Alessandra Bottero<sup>1,2</sup>, Ulrich Kohne<sup>3</sup>, Jürgen Bauhus<sup>3</sup>, Marc Hanewinkel<sup>12</sup>, Julia Schwarz<sup>3</sup>, Andreas Rigling<sup>1,2,6</sup>, David I. Forrester<sup>1,2</sup>, Arthur Gessler<sup>1,2,9</sup>, Harald Bugmann<sup>2,8</sup>, Mathieu Lévêque<sup>12</sup>, Maxime Cailleret<sup>1,4</sup>, Arun K. Bose<sup>1,9</sup>, Dominic Michel<sup>7,8</sup>, Matthias Cuntz<sup>10</sup>, James Ryder<sup>10</sup>, Loïc Gillerot<sup>12,11</sup>, Julian Sainte-Marie<sup>10</sup>, Juan Carlos Zamora-Pereira<sup>10</sup>

nature COMMUNICATIONS

ARTICLE

Received 25 Dec 2015 | Accepted 21 Jul 2016 | Published xx xxx 2016

DOI: 10.1038/ncomms12662 OPEN

Ectomycorrhizal ecology is imprinted in the genome of the dominant symbiotic fungus *Cenococcum geophilum*

Martina Peter<sup>1,\*</sup>, Matthias Arend<sup>1</sup>, Sajeet Haridas<sup>1</sup>, Irma Mihaltcheva<sup>3</sup>, Christoph Speriser<sup>1</sup>, In Egl<sup>1</sup>, Joseph W. Spatafora<sup>14</sup>, Annegret Kohler<sup>2</sup>, Kerrie W. Barry<sup>3</sup>, Tabea Kipfer<sup>1</sup>, Virginie Molinier<sup>1</sup>, Claude Murat<sup>2</sup>, Emilie Tisserant<sup>2</sup>, Igor V. Grigoriev<sup>3</sup>, Robin A. Ohm<sup>3,4</sup>, Alan Kuo<sup>3</sup>, Jennifer Krützmann<sup>5</sup>, Manfred Binder<sup>6</sup>, Cindy Choi<sup>3</sup>, Alicia Clum<sup>3</sup>, Alex Copeland<sup>3</sup>, Emmanuelle Morin<sup>3</sup>, Erika Lindquist<sup>3</sup>, Anna Lipzen<sup>3</sup>, Renaud Maire<sup>1</sup>, Nadine Grunwald<sup>1</sup>, Barbara Meier<sup>1</sup>, Stefanie Pöggeler<sup>7,8</sup>, C. Alisha Quandt<sup>9</sup>, Pedro W. Crous<sup>6</sup>, Bernard Henrissat<sup>10,11,12,13</sup>, Uwe Nehls<sup>10</sup>, Francis M. Martin<sup>14</sup>

## Tree diversity does not always improve resistance of forest ecosystems to drought

Charlotte Grossiord<sup>1</sup>, André Granier<sup>a</sup>, Sophia Ratcliffe<sup>b</sup>, Olivier Bouriaud<sup>c</sup>, Helge Bruelheide<sup>d,e</sup>, Ewa Chečko<sup>f</sup>, David Ian Forrester<sup>g</sup>, Seid Mune Dawud<sup>h</sup>, Leena Finér<sup>i</sup>, Martina Pollastrini<sup>j</sup>, Michael Scherer-Lorenzen<sup>k</sup>, Fernando Valladares<sup>l</sup>, Damien Bonal<sup>a,1,2</sup> and Arthur Gessler<sup>m,n,o</sup>

<sup>a</sup>Unité Mixte de Recherche 1137, Ecologie et Ecophysiologie Forestières, Institut National de la Recherche Agronomique, 54280 Champenoux, France; <sup>b</sup>Institut für Spezielle Botanik und Funktionelle Biodiversität, University Leipzig, 04103 Leipzig, Germany; <sup>c</sup>Forestry Faculty, University of Suceava, 720229 Suceava, Romania; <sup>d</sup>Institute of Biology/Geobotany and Botanical Garden, Martin Luther University Halle Wittenberg, 06108 Halle, Germany; <sup>e</sup>German Centre for Integrative Biodiversity Research, 04103 Leipzig, Germany; <sup>f</sup>Faculty of Biology, Białowieża Geobotanical Station, University of Warsaw, 17-230 Białowieża, Poland; <sup>g</sup>Faculty of Environment and Natural Resources, Freiburg University, 79108 Freiburg, Germany; <sup>h</sup>Department of Geosciences and Natural Resource Management, University of Copenhagen, 2100 Copenhagen, Denmark; <sup>i</sup>Department of Forest Sciences, University of Helsinki, 00014 Helsinki, Finland; <sup>j</sup>Department of Ecology and Evolutionary Biology, University of Colorado Boulder, 80509 Boulder, Colorado, USA; <sup>k</sup>Department of Ecology and Evolutionary Biology, University of Colorado Boulder, 80509 Boulder, Colorado, USA; <sup>l</sup>Department of Ecology and Evolutionary Biology, University of Colorado Boulder, 80509 Boulder, Colorado, USA; <sup>m</sup>Department of Ecology and Evolutionary Biology, University of Colorado Boulder, 80509 Boulder, Colorado, USA; <sup>n</sup>Department of Ecology and Evolutionary Biology, University of Colorado Boulder, 80509 Boulder, Colorado, USA; <sup>o</sup>Department of Ecology and Evolutionary Biology, University of Colorado Boulder, 80509 Boulder, Colorado, USA



NFZ as main-organizer of

IUFRO

Interconnecting Forests,  
Science and People

125<sup>th</sup> Anniversary  
Congress 2017

EFI  
20 years  
© EFI 2011

NFZ.forestnet welcomes EFI 20th anniversary conference in Nancy  
23 to 27 September, 2013 - Nancy, France

 nfz.forestnet



125<sup>TH</sup> ANNIVERSARY  
CONGRESS 2017

19 – 22 September 2017  
Freiburg, Germany

IUFRO



[www.iufro2017.com](http://www.iufro2017.com)



# Waldwissen.net

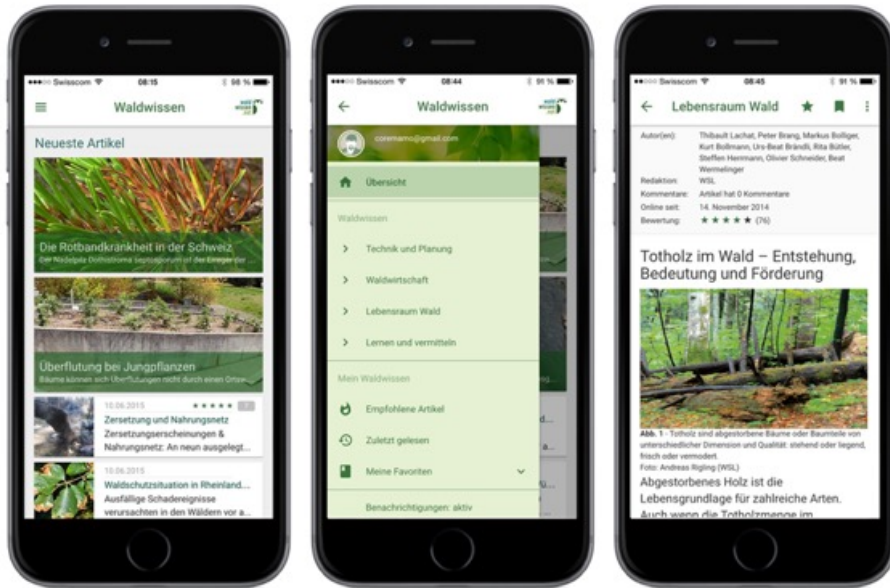


“Provision of practical knowledge about forests and forestry in an easily understandable form for practitioners and an interested public“

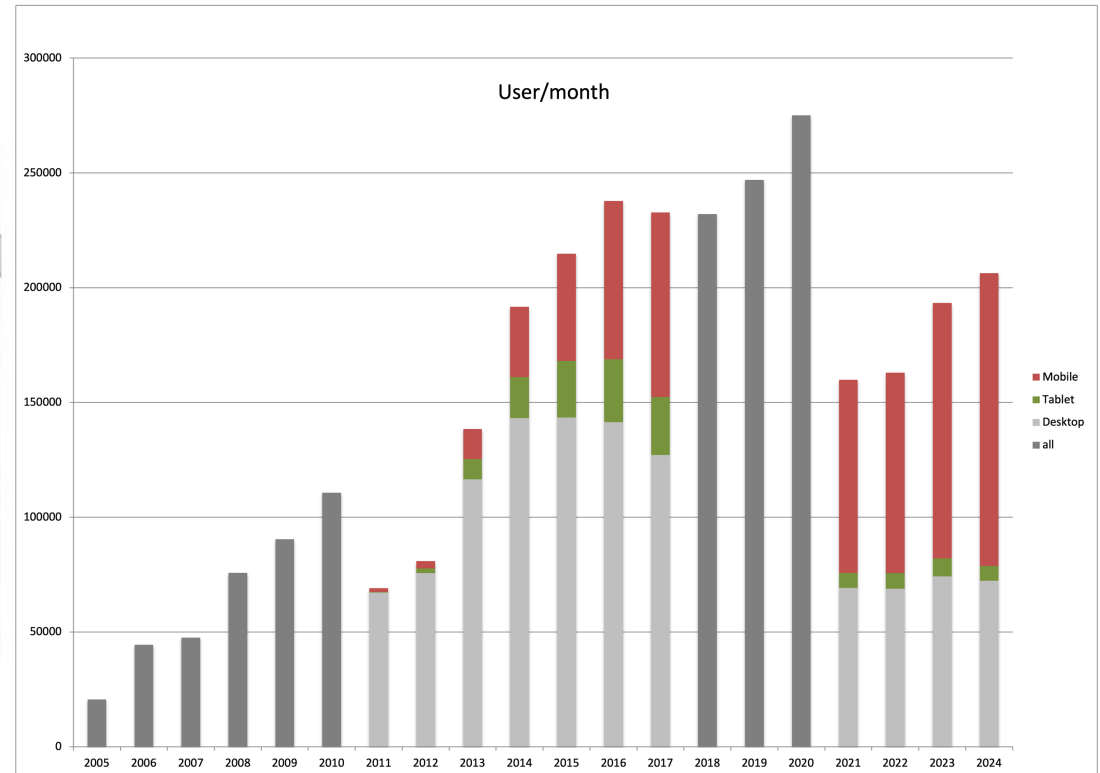


- 2005: Joint multilingual information system  
waldwissen.net goes online with 600 articles
- 2025: >3400 publications online in G, F, I and E (>300)

# Waldwissen.net



## Waldwissen mobile



- 2'475'994 visits were registered in 2024.
- Meanwhile more than 60% use Waldwissen mobile.





Thank you and the VELUX STIFTUNG

TRINATIONAL  
FORESTLAB



## Context

- Due to the resolutions of the last General Meeting and the financial support from the WSL, amendments to the Articles of Association were necessary.
- Two articles must therefore be amended:

## 1. Organs of the SwissForestLab

Members of the SwissForestLab are entitled to vote and can be elected to the various bodies of the SwissForestLab. The Steering Committee decides on unclear cases. Decisions are passed by a majority vote (Mehrheitsentscheid). The organs of the SwissForestLab, their structure and explanations of the decision paths are shown at the end of the text in a graph (Fig. 1). In addition to the General Assembly, the central decision-making body is the Steering Committee, which is elected every three years by the members. The members of the Steering Committee may be re-elected once. **There is one exception as long as the SwissForestLab is hosted and primarily financially supported by one institution. During that time, the head of the SwissForestLab must be an employee of that institution, and for the sake of internal organisational continuity, this person can be re-elected several times.**

# SwissForestLab (Revision of the statutes)



## 2.4. Membership fee:

On 09.02.2024, the General Assembly decided to introduce annual membership fees. Three variants of membership fees were introduced:

- Group of >10 members: 1'500 CHF per year
- Groups of ≤10 members: 1'000 CHF per year
- Individual: CHF 200 per year

### Membership includes:

- Organization of thematical workshops (max 3 calls per year)
- Financial support to organize meetings, workshops and invited speakers in the members institution
- Yearly summer school
- Yearly Science Day to showcase the member's research
- Every two years a SwissForestLab Dialog with practitioners and stakeholders
- Access and support to EnviDat (for non-WSL members)
- News flash and social media to showcase your research
- Continued acquisition of further means for SFL projects
- Members of the SFL get discount for events organized by the SFL.

The annual membership fee will be invoiced by the Executive Office after prior notification.

Every year, the Executive Office asks the group leader applicants to update the list of group members.



# SwissForestLab (Revision of the Articles of Association)



## Decision Paths SwissForestLab



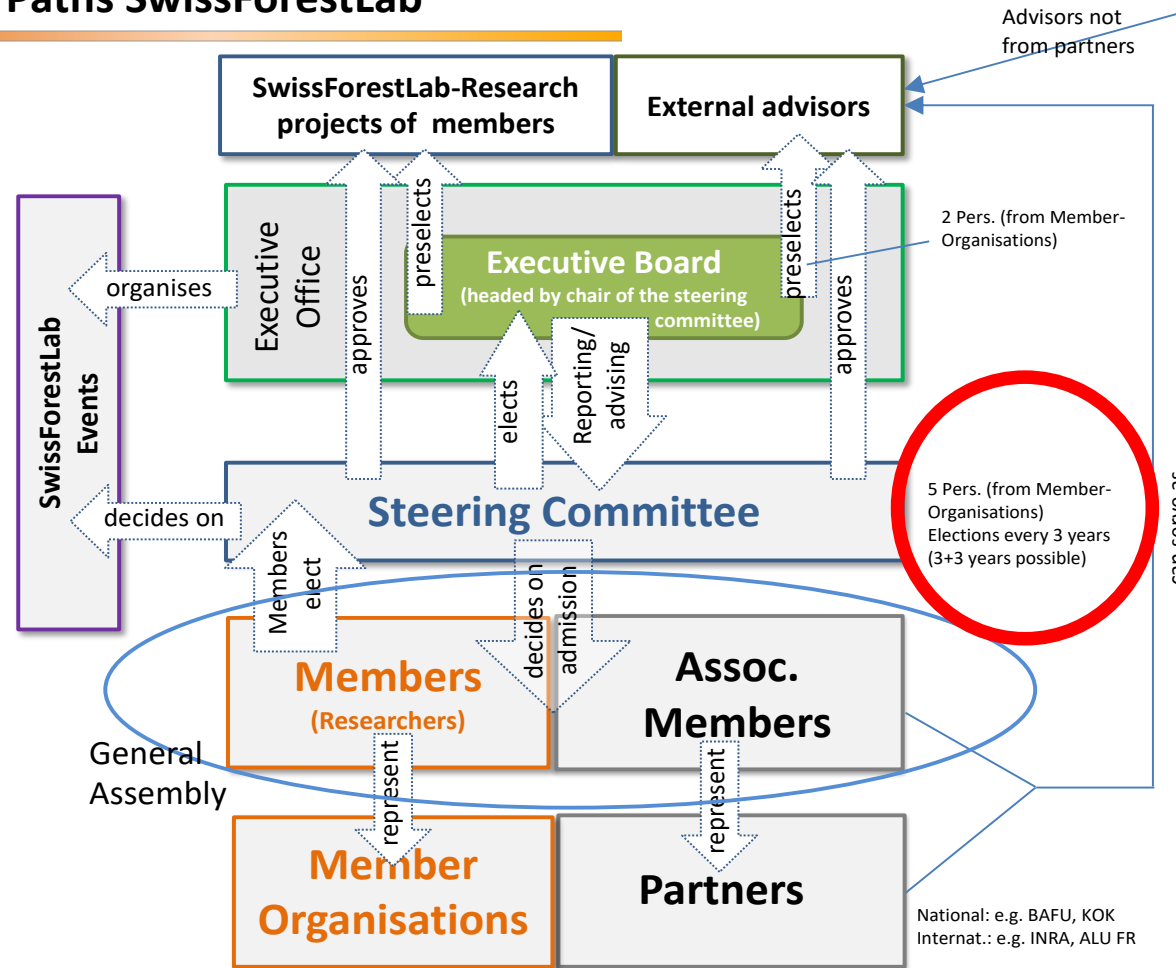
SwissForestLab General Assembly

21.01.2025

# Steering Committee of the SwissForestLab



## Decision Paths SwissForestLab



SwissForestLab General Assembly

21.01.2025



# The steering committee 2024 – 2025



Andreas Rigling  
**ETH Zurich**  
Forest growth and Global Change; climate-smart and integrated forest management



Arthur Gessler  
**WSL**  
Biogeochemical cycles, ecosystem ecology and long-term forest monitoring



Charlotte Grossiord  
**EPFL**  
Ecophysiology and species interaction



Dr. Günter Hoch  
**Uni Basel**  
Ecophysiology of trees, Carbon reserve functions in plants, Drought stress physiology, Cold limits of trees and alpine treelines



Willy Tinner  
**Uni Bern**  
Palaeoecology; a long-term perspective to address questions about the ecological and societal consequences of climatic change

# The steering committee – list of nominees



## Steering Committee Members already confirmed last General Assembly



Andreas Rigling  
**ETH Zurich**  
Forest growth and Global Change; climate-smart and integrated forest management



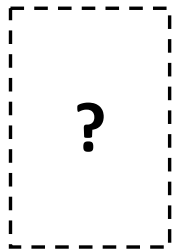
Arthur Gessler  
**WSL**  
Biogeochemical cycles, ecosystem ecology and long-term forest monitoring



Charlotte Grossiord  
**EPFL**  
Ecophysiology and species interaction



Dr. Günter Hoch  
**Uni Basel**  
Ecophysiology of trees, Carbon reserve functions in plants, Drought stress physiology, Cold limits of trees and alpine treelines



New Member

# The steering committee – The Candidates



Prof. Dr. Benjamin Stocker  
**Uni Berne**

Geocomputation and Earth  
Observation

## From Beni's LinkedIn site:

I am a **climate and environmental scientist** specialising in interactions between climate change and terrestrial ecology and biogeochemistry.

My work is dedicated to **providing data-informed predictions** of how land ecosystems respond to a changing climate, increasing CO<sub>2</sub> and changes in nutrient cycles. I'm developing **numerical models**, as simple as possible and as complex as necessary to learn the most.

I'm proud to be contributing to a better understanding of issues that are becoming increasingly pressing to society and policy and am dedicated to farsighted thinking and strategic planning for a sustainable future.

## Education

- PhD in Climate Sciences, Climate- and Environmental Physics, University of Bern, Nov 2009 - Dec 2013.
- MSc in Climate Sciences, Climate- and Environmental Physics, University of Bern, Sep 2007 - Oct 2009.
- Undergraduate in Geography with a Minor in Physics, Complementary in General Ecology, University of Bern, Jun 2006.

## Employment

- Assistant Professor (Tenure Track) in Geocomputation and Earth Observation, Institute of Geography, University of Bern, Aug 2022 - present.
- Assistant Professor (non-Tenure Track) for Computational Ecosystem Science, ETH Zürich, and WSL Birmensdorf, Switzerland, Sep 2019 - Jul 2022.
- Several Postdoctoral Positions (including a Marie Skłodowska-Curie Postdoctoral Research Fellowship) at the University of Bern,
- the Imperial College London, at ETH Zürich, and the Ecological and Forestry Applications Research Centre (CREAF) in Barcelona, Spain from Jan 2014 - Feb 2019.

# Acknowledgement



Willy Tinner

**Uni Bern**

Palaeoecology; a long-term perspective  
to address questions about the  
ecological and societal consequences of climatic change

# Thanks



WSL and BAFU for financial support

Members and partners for their contribution  
to workshops, summer schools, projects,  
activities.....